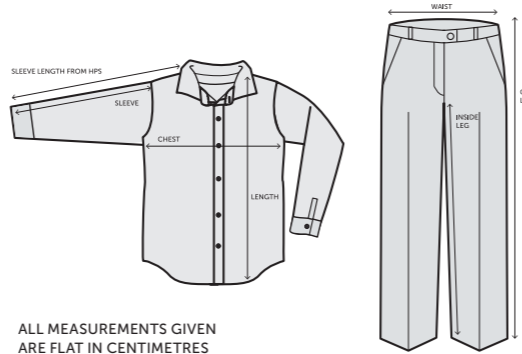


GARMENT MEASUREMENTS

Measurements for all styles.

CHEST	Measure flat 2.5cm below armhole.
FRONT LENGTH	Measure from HPS (High Point Shoulder – where the shoulder seam meets the neck of the garment) to the hem.
SLEEVE LENGTH	Measure overarm from shoulder seam to bottom of the cuff / or HPS to cuff.
WAIST	Measure flat across full width of waistband.
INSIDE LEG	Measure from crotch to hem.
OUTSIDE LEG	Measure from top of waist band to hem.



ALL MEASUREMENTS GIVEN ARE FLAT IN CENTIMETRES

POLO SHIRTS		S	M	L	XL	2XL			Tol		
H020											
ROLL NECK TOP	Half chest	50.0	53.0	56.0	60.0	64.0			+/-1.5		
	Length	71.0	73.0	75.0	77.0	80.0			+/-2.0		
	Sleeve length	59.0	61.0	63.0	65.0	67.0			+/-1.5		
H100 / H150		XS	S	M	L	XL	2XL	3XL			
CLASSIC COTTON / DOUBLE TIPPING COTTON POLO SHIRTS	Half chest	47.0	50.5	54.0	57.5	61.0	65.0	69.0	+/-1.5		
	Length	68.5	70.5	72.5	74.5	76.5	78.5	80.5	+/-2.0		
	Sleeve length	23.0	24.0	24.5	25.0	25.5	26.0	26.5	+/-1.5		
H101		XS	S	M	L	XL	2XL	3XL	4XL	5XL	
MEN'S MICRO-FINE COTTON PIQUE POLO SHIRT	Chest	46.5	50.0	53.5	57.0	60.5	64.5	68.0	72.0	75.5	
	Length	69.5	71.5	73.5	75.5	77.5	79.5	81.5	84.0	86.5	
	Sleeve length	22.5	23.0	23.5	24.0	24.5	25.5	26.0	27.0	27.5	
H102		XXS	XS	S	M	L	XL	2XL			
LADIES' MICRO-FINE COTTON PIQUE POLO SHIRT	Chest	39.5	42.0	45.5	49.0	52.5	56.0	59.5		+/-1.5	
	Length	62.0	63.0	64.0	65.0	66.0	67.0	68.0		+/-2.0	
	Sleeve length	12.0	13.0	14.0	15.0	16.0	17.0	18.0		+/-1.0	
H105		S	M	L	XL	2XL					
LONG SLEEVED PIQUE POLO SHIRT	Half chest	48.0	53.0	57.5	61.0	65.0			+/-1.5		
	Body length	68.0	73.0	76.0	79.0	82.0			+/-2.0		
	Sleeve length inc' cuff	62.0	63.5	64.5	65.5	66.5			+/-1.5		
H121		S/10	M/12	L/14	XL/16	2XL/18					
LADIES' CLASSIC COTTON POLO SHIRT	Half chest	49.5	52.0	54.5	57.0	61.0			+/-1.5		
	Length	62.0	64.5	67.0	69.5	72.0			+/-2.0		
	Sleeve length	23.0	23.0	24.0	24.0	24.0			+/-1.5		
H151		S	M	L	XL	2XL					
2 TONE PIQUE DOUBLE TIPPED POLO SHIRT	Chest	49.5	53.0	56.5	60.0	64.0			+/-1.5		
	Length	70.5	72.0	73.5	75.0	76.5			+/-2.0		
	Sleeve length	23.0	23.5	24.0	24.5	25.5			+/-1.5		
H305		S	M	L	XL	2XL					
STRETCH POLO SHIRT	Half chest	47.0	52.0	57.0	60.0	64.0			+/-2.0		
	Length	68.0	72.0	76.0	78.0	81.0			+/-2.0		
	Sleeve length	24.0	24.0	24.5	25.0	25.0			+/-1.5		
H306		S/10	M/12	L/14	XL/16						
LADIES' STRETCH POLO SHIRT	Half chest	41.0	44.0	47.0	50.0				+/-2.0		
	Length	60.5	63.0	65.5	68.0				+/-2.0		
	Sleeve length	14.0	14.5	15.0	15.5				+/-1.5		
H400		XS	S	M	L	XL	2XL	3XL	4XL	5XL	
65% POLYESTER 35% COTTON POLO SHIRT	Half chest	46.0	49.0	52.5	56.5	60.0	64.0	68.0	71.5	75.0	
	Length	66.0	69.0	72.0	74.0	76.0	78.0	80.0	83.0	85.5	
	Sleeve length	22.5	24.0	24.5	25.0	25.0	25.0	25.0	25.5	25.5	
H401		XS/8	S/10	M/12	L/14	XL/16	2XL/18	3XL/20			
LADIES' 65% POLYESTER 35% COTTON POLO SHIRT	Half chest	46.0	48.0	51.0	54.0	57.0	59.0	62.0		+/-1.5	
	Length	62.5	63.5	65.0	66.0	67.0	68.0	69.0		+/-2.0	
	Sleeve length	21.0	22.0	23.0	24.0	24.0	24.0	24.0		+/-1.5	
H410		S	M	L	XL	2XL	3XL	4XL			
ULTIMATE 65/35 POLO SHIRT	Half chest	48.5	52.5	57.5	61.0	64.5	68.5	72.5		+/-1.5	
	Length	68.0	71.0	74.0	77.0	79.5	81.5	84.5		+/-2.0	
	Sleeve length	24.0	24.5	25.0	25.0	25.0	25.0	25.5		+/-1.5	
H450		XS	S	M	L	XL	2XL				
ADULTS' DOUBLE TIPPED 65/35 PIQUE POLO SHIRT	Half chest	47.0	48.5	52.5	57.5	61.0	64.5			+/-1.5	
	Length	65.0	68.0	71.0	74.0	77.0	79.5			+/-2.0	
	Sleeve length	22.5	24.0	24.5	25.0	25.0	25.0			+/-1.5	
H460		XS	S	M	L	XL	2XL	3XL			
MEN'S STRETCH POLO SHIRT + WICK FINISH	Half chest	44.0	47.5	51.0	54.5	58.0	62.0	65.5		+/-1.5	
	Length	68.0	70.0	72.0	74.0	76.0	78.0	80.0		+/-2.0	
	Sleeve length	21.0	21.5	22.0	22.5	23.0	24.0	24.5		+/-1.5	
H461		XS	S	M	L	XL	2XL				
LADIES' STRETCH POLO SHIRT + WICK FINISH	Half chest	39.0	42.5	46.0	49.5	53.0	56.5			+/-1.5	
	Length	60.0	62.0	64.0	66.0	68.0	70.0			+/-2.0	
	Sleeve length	15.0	15.5	16.0	16.5	17.0	17.5			+/-1	
H473		S	M	L	XL	2XL					
COOLTOUCH® TEXTURED STRIPE POLO SHIRT	Half chest	50.0	53.0	56.0	59.0	62.0			+/-1.5		
	Length	69.0	72.0	75.0	77.0	80.0			+/-2.0		
	Sleeve length	22.5	23.0	23.5	24.0	24.5			+/-1.5		
H475		XXS	XS	S	M	L	XL	2XL	3XL	4XL	5XL
COOLPLUS® PIQUE POLO SHIRT	Half chest	44.0	47.0	50.0	53.0	56.0	59.0	62.5	66.0	69.5	73.5
	Length	66.0	68.0	70.0	72.0	74.0	75.0	76.0	77.0	78.0	79.0
	Sleeve length	22.0	23.0	24.0	24.5	25.0	25.0	25.5	26.0	26.5	
H476		XS/8	S/10	M/12	L/14	XL/16	2XL/18	3XL/20			
LADIES' COOLPLUS® PIQUE POLO SHIRT	Half chest	43.0	45.5	48.5	51.5	54.5	57.5	60.0		+/-1.5	
	Length	61.5	63.0	65.0	67.0	69.0	71.0	73.0		+/-2.0	
	Sleeve length	14.0	14.5	15.0	16.0	17.0	18.0	19.0		+/-1.5	
H478		XXS	XS	S	M	L	XL	2XL			
COOLPLUS® LONG SLEEVE PIQUE POLO SHIRT	Half chest	44.0	47.0	50.0	53.0	56.0	59.0	62.0		+/-1.5	
<i>New size</i>	Length	69.0	71.0	73.0	75.0	77.0	78.0	79.0		+/-2.0	
	Sleeve length	59.0	60.0	61.0	62.0	63.0	64.0	65.0		+/-1.5	
H482		XS	S	M	L	XL	2XL	3XL			
COOLPLUS® DOUBLE TIPPED PIQUE POLO SHIRT	Half chest	47.0	50.0	53.0	56.0	59.0	62.0	65.0		+/-1.5	
	Length	68.0	70.0	72.0	74.0	75.0	76.0	77.0		+/-2.0	
	Sleeve length	23.5	24.0	24.5	25.0	25.5	26.0	26.5		+/-1.5	
H490		S	M	L	XL	2XL					
CONTRAST TRI-BLEND POLO SHIRT	Half chest	50.0	53.0	56.0	59.0	62.0			+/-1.5		
<i>New style</i>	Length	70.0	72.0	74.0	76.0	78.0			+/-2.0		
	Sleeve length	21.5	22.0	22.5	23.0	24.0			+/-1.5		

WOVEN SHIRTS		S	M	L	XL	2XL	3XL	4XL						
H510 / H515														
MEN'S CLASSIC OXFORD SHIRT	Neck size : inches	15"	15.5"	16-16.5"	17-17.5"	18"	19"	20"						
	Half chest	57.0	59.5	62.0	64.5	67.0	69.5	73.0						+/-1.5
	Length	78.5	80.0	81.5	83.0	84.5	86.0	87.5						+/-2.0
	Long - sleeve length	63.0	64.0	65.0	66.0	67.0	68.0	69.0						+/-1.5
	Short - sleeve length	25.0	26.0	27.0	28.0	29.0	30.0	31.0						+/-1.5
H511 / H516		XS/8	S/10	M/12	L/14	XL/16	2XL/18	3XL/20	22 /4XL					
LADIES' CLASSIC OXFORD SHIRT	Half chest	47.0	49.0	51.5	54.0	57.0	60.0	63.0	66.0					+/-1.5
	Length	68.0	69.0	70.0	70.5	71.0	71.5	72.0	72.5					+/-2.0
	Long - sleeve length	60.5	61.0	61.5	62.0	62.5	63.0	63.5	64.0					+/-1.5
	Short - sleeve length	22.0	23.0	24.0	25.0	25.5	26.5	27.0	27.5					+/-1.5
H512C		S	M	L	XL	2XL	3XL	4XL						
MEN'S MODERN L/S OXFORD SHIRT – CLASSIC FIT	Chest	53.5	56.5	59.5	62.5	65.5	68.5	71.5						+/-1.5
	Length	76.5	78.0	79.5	81.0	82.5	84.0	85.5						+/-2.0
	Sleeve length	64.0	65.0	66.0	67.0	68.5	69.5	70.5						+/-1.5
H512R		XS	S	M	L	XL	2XL	3XL	4XL					
MEN'S MODERN L/S OXFORD SHIRT – REGULAR FIT	Chest	49.0	52.0	55.0	58.0	61.0	64.0	67.0	70.0					+/-1.5
	Length	75.0	76.5	78.0	79.5	81.0	82.5	84.0	85.5					+/-2.0
	Sleeve length	64.0	65.0	66.0	67.0	68.0	69.5	70.5	71.5					+/-1.5
H512S		S	M	L	XL	2XL								
MEN'S MODERN L/S OXFORD SHIRT – SLIM FIT	Chest	50.5	53.5	56.5	59.5	62.5								+/-1.5
	Length	74.5	76.0	77.5	79.0	80.5								+/-2.0
	Sleeve length	65.0	66.0	67.0	68.0	69.5								+/-1.5
H513R		XS	S	M	L	XL	2XL	3XL	4XL					
LADIES' MODERN L/S OXFORD SHIRT – REGULAR FIT	Chest	45.5	48.0	50.5	53.0	55.5	58.0	60.5	63.0					+/-1.5
	Length	65.5	66.0	66.5	67.0	67.5	68.0							

WOVEN TROUSERS AND SHORTS										
H600 / H605										
MEN'S TEFLON® TROUSERS & SHORTS										
Waist to fit inches	30"	32"	34"	36"	38"	40"	42"	44"		
Waist flat cm	39.5	42.0	44.5	47.0	49.5	52.0	54.5	57.0		+/-1.5
Hip	55.0	57.0	59.0	61.0	63.0	65.0	67.0	69.0		+/-1.0
Thigh at fork	34.0	34.5	36.0	37.5	38.5	40.0	41.5	43.0		+/-1.0
Inside leg - short	30.5"	30.5"	30.5"	30.5"	30.5"	30.5"				+/-1.5
Inside leg - regular	32.5"	32.5"	32.5"	32.5"	32.5"	32.5"				+/-1.5
Inside leg - long	34.5"	34.5"	34.5"	34.5"	34.5"	34.5"				+/-1.5
Unfinished length (42" & 44" waist only)							36"	36"		+/-1.5
H605 - hem width	31.5	32.0	33.0	34.0	35.0	36.0				+/-1.0
H605 - outside leg	50.0	50.0	50.0	50.0	50.0	50.0				+/-1.5
H602										
LADIES' TEFLON® TROUSERS										
Waist flat cm	38.0	40.5	43.0	45.5	48.0	50.5	53.0	55.5		+/-1.5
Mid hip across bottom of fly	47.0	49.5	52.0	54.5	57.0	59.5	62.0	64.5		+/-1.5
Thigh at fork	30.0	31.0	32.0	33.0	34.0	35.0	36.0	38.0		+/-1.0
Hem	23.0	23.5	24.0	24.5	25.0	25.5	26.0	26.0		+/-1.0
Inside leg - regular	32"	32"	32"	32"	32"	32"	32"	32"		+/-1.0
H603										
MEN'S SINGLE PLEAT TROUSERS										
Waist to fit inches	30"	32"	34"	36"	38"	40"	42"	44"		
Waist flat cm	39.5	42.0	44.5	47.0	49.5	52.0	54.5	57.0		+/-1.5
Hip	53.0	55.0	57.0	59.0	61.0	63.0	65.0	67.0		+/-1.0
Thigh at fork	33.0	34.0	35.0	36.0	37.0	38.0	39.0	40.0		+/-1.0
Hem	22.0	22.0	23.0	23.0	24.0	24.0	25.0	25.0		+/-1.0
Inside leg - regular	32"	32"	32"	32"	32"	32"				+/-1.5
Inside leg - long	34"	34"	34"	34"	34"	34"				+/-1.5
Unfinished length (42" & 44" waist only)							36"	36"		+/-1.5
H607										
LADIES' FLAT FRONTED SHORTS										
Waist flat cm	38.0	40.5	43.0	45.5	48.0	50.5				+/-1.5
Mid hip across bottom of fly	47.0	49.5	52.0	54.5	57.0	59.5				+/-1.5
Thigh at fork	30.0	31.5	33.0	34.5	36.0	37.5				+/-1.5
Hem	26.5	27.5	28.5	29.5	30.5	31.5				+/-1.0
Inside leg	26.0	26.5	27.0	27.5	28.0	28.5				+/-1.0
H608										
MEN'S FLAT FRONTED TROUSERS										
Waist to fit inches	30"	32"	34"	36"	38"	40"	42"	44"		
Waist flat cm	39.0	41.5	44.0	46.5	49.0	51.5	54.0	56.5		+/-1.5
Hip	51.0	53.5	56.0	58.5	61.0	63.5	66.0	68.5		+/-1.0
Thigh at fork	32.0	33.3	34.5	35.8	37.0	38.3	39.5	40.8		+/-1.0
Hem	21.0	22.0	23.0	24.0	25.0	26.0	27.0	28.0		+/-1.0
Inside leg - regular	32.5"	32.5"	32.5"	32.5"	32.5"	32.5"				+/-1.5
Inside leg - long	34.5"	34.5"	34.5"	34.5"	34.5"	34.5"				+/-1.5
Unfinished length (42" & 44" waist only)							36"	36"		+/-1.0
H630										
MEN'S TAPERED-LEG TROUSERS										
Waist	40.5	43.0	45.5	48.0	50.5	53.0	55.5	58.0		+/-1.0
Hip	46.0	48.5	51.0	53.5	56.0	58.5	61.0	63.5		+/-1.0
Thigh	30.5	31.8	33.0	34.3	35.5	36.8	38.0	39.3		+/-1.0
Hem	18.0	18.5	19.0	19.5	20.0	20.5	21.0	21.5		+/-1.0
Inside leg - regular	31"	31"	31"	31"	31"	31"				+/-1.5
Inside leg - long	33"	33"	33"	33"	33"	33"				+/-1.5
Unfinished length (42" & 44" waist only)							36"	36"		+/-1.5
H631										
LADIES' TAPERED-LEG TROUSERS										
Waist	38.0	40.5	43.0	45.5	48.0	50.5	53.5	56.0		+/-1.0
Hip	45.5	48.0	50.5	53.0	55.5	58.0	61.0	63.5		+/-1.0
Thigh	28.5	30.0	31.5	33.0	34.5	36.0	38.0	40.0		+/-1.0
Hem	15.0	15.5	16.0	16.5	17.0	17.5	18.0	18.5		+/-1.0
Inside leg - regular	29"	29"	29"	29"	29"	29"	29"	29"		+/-1.5
Inside leg - long	31"	31"	31"	31"	31"	31"	31"	31"		+/-1.5
H640										
MEN'S 65/35 FLAT FRONT CHINO										
Waist to fit inches	30"	32"	34"	36"	38"	40"	42"	44"		
Waist flat cm	40.0	42.5	45.0	47.5	50.0	52.5	55.0	57.5		+/-1.5
Hip	50.0	52.5	55.0	57.5	60.0	62.5	65.0	67.5		+/-1.0
Thigh at fork	30.5	31.8	33.0	34.3	35.5	36.8	38.0	39.3		+/-1.0
Hem	21.0	21.0	21.5	22.0	22.5	23.0	24.0	25.0		+/-1.0
Inside leg - regular	32"	32"	32"	32"	32"	32"				+/-1.5
Inside leg - long	34"	34"	34"	34"	34"	34"				+/-1.5
Unfinished length (42" & 44" waist only)							36"	36"		+/-1.0
H641										
LADIES' 65/35 FLAT FRONT CHINO										
Waist flat cm	40.0	42.5	45.0	47.5	50.0	52.5	55.0	57.5		+/-1.5
Hip	47.0	49.5	52.0	54.0	57.0	59.5	62.0	64.5		+/-1.0
Thigh at fork	29.0	30.0	31.0	32.0	33.0	34.5	36.0	37.0		+/-1.0
Hem	17.5	18.0	18.5	19.5	20.0	20.5	21.0	21.5		+/-1.0
Inside leg - regular	31"	31"	31"	31"	31"	31"	31"	31"		+/-1.5
Inside leg - long	33"	33"	33"	33"	33"	33"	33"	33"		+/-1.5
H650										
MEN'S STRETCH CHINO WITH FLEX WAISTBAND										
Waist	39.0	41.5	44.0	46.5	49.0	51.5	54.5	57.0		+/-1.5
Hip	49.5	52.0	54.5	57.0	59.5	62.0	65.0	68.0		+/-1.0
Thigh	30.0	31.0	32.0	33.0	34.0	35.0	36.0	37.0		+/-1.0
Regular - inside leg 32"	32"	32"	32"	32"	32"	32"	N/A	N/A		+/-1.5
Long - inside leg 34"	34"	34"	34"	34"	34"	34"	N/A	N/A		+/-1.5
Unfinished length (42" & 44" waist only)	N/A	N/A	N/A	N/A	N/A	N/A	36"	36"		+/-1.0
H651										
LADIES' STRETCH CHINO										
Waist	37.5	40.0	42.5	45.0	47.5	50.0	52.5	55.0		+/-1.5
Hip	45.5	48.0	50.5	53.0	55.5	58.0	60.5	63.0		+/-1.0
Thigh	29.5	30.5	31.5	32.5	33.5	34.5	35.5	36.5		+/-1.0
Inside leg - regular - 30"	31"	31"	31"	31"	31"	31"	31"	31"		+/-1.5
KNITWEAR										
H716										
MEN'S KNITTED SHORT SLEEVED POLO										
Half chest	43.0	46.5	50.0	53.5	57.0	61.0				+/-1.5
Length	64.0	66.0	68.0	70.0	72.0	74.0				+/-2.0
Sleeve length from hps	24.0	24.5	25.0	25.5	26.0	27.0				+/-1.5
H718										
UNISEX KNITTED BOMBER JACKET										
Half chest	43.0	46.0	49.5	53.0	56.5	60.0	64.0	67.5		+/-1.5
Length	63.0	65.5	68.0	70.0	72.0	74.0	76.0	78.0		+/-2.0
Sleeve length from hps	59.0	61.0	63.0	65.0	67.0	69.0	71.0	73.0		+/-1.5
H719										
LADIES' LONGLINE OPEN CARDIGAN										
Half chest	43.0	46.0	49.0	52.0	55.0	58.0	61.0	64.0		+/-1.5
Length	86.0	87.0	88.0	89.0	90.0	91.0	92.0	93.0		+/-2.5
Sleeve length from hps	61.0	61.0	62.0	62.0	63.0	63.0	64.0	65.0		+/-1.5
H720										
MEN'S 50/50 V-NECK JUMPER										
Half chest	41.0	45.0	49.0	53.0	57.0	61.0	65.0	68.0	71.0	+/-1.5
Length	64.5	67.5	70.0	72.0	74.0	76.0	78.0	79.0	80.0	+/-2.0
Sleeve length from hps	70.5	73.5	76.0	78.0	80.0	82.0	83.5	85.0	86.5	+/-1.5

H721										
LADIES' 50/50 V-NECK JUMPER										
Half chest	39.0	42.0	45.0	48.0	51.0	54.0	57.0	60.0	63.0	+/-1.5
Length	60.0	62.5	63.5	65.0	66.0	67.0	68.0	69.0	70.0	+/-2.0
Sleeve length from hps	67.0	68.5	70.0	70.5	71.0	71.5	72.0	72.5	73.0	+/-1.5
H722										
MEN'S 50/50 V-NECK CARDIGAN										
Half chest	45.0	49.0	53.0	57.0	61.0	65.0	69.0	73.0		+/-1.5
Length	68.0	70.0	72.0	74.0	76.0	78.0	80.0	82.0		+/-2.0
Sleeve length from hps	74.0	76.0	78.0	80.0	82.0	84.0	86.0	88.0		+/-1.5
H723										
LADIES' 50/50 V-NECK BUTTON CARDIGAN										
Half chest	37.0	40.0	43.0	46.0	49.0	52.5	56.0	59.0	62.0	+/-1.5
Length	67.0	68.5	70.0	71.0	72.0	72.0	73.0	73.0		+/-2.0
Sleeve length from hps	67.0	68.5	70.0	70.5	71.0	71.5	72.0	72.5	73.0	+/-1.5
H724										
MEN'S 50/50 SLEEVELESS JUMPER										
Half chest	49.0	53.0	57.0	61.0	65.0	67.5	70.0			+/-1.5
Length	68.0	70.0	72.0	74.0	75.0	76.0	77.0			+/-2.0
H725										
MEN'S 50/50 CREW NECK JUMPER										
Half chest	49.0	53.0	57.0	61.0	65.0	68.0	71.0			+/-1.5
Length	70.0	72.0	74.0	76.0	78.0	79.0	80.0			+/-2.0
Sleeve length from hps	76.0	78.0	80.0	82.0	83.5	85.0	86.0			+/-1.5
H726										
LADIES' 50/50 V-NECK CARDIGAN										
Half chest	39.5	42.0	44.5	47.0	49.5	52.0	54.5	57.0	59.5	+/-1.5
Length	56.0	57.0	58.0	59.0	60.0	61.0	62.0	63.0	64.0	+/-2.0
Sleeve length from hps	57.0	58.0	58.0	59.0	59.0	60.0	60.0	61.0	61.0	+/-1.5
H727										
MEN'S 50/50 ROLL-NECK JUMPER										
Chest	43.5	47.0	50.5	54.0	57.5	61.5	65.0			+/-1.5
Length	68.0	70.0	72.0	74.0	76.0	78.0				